



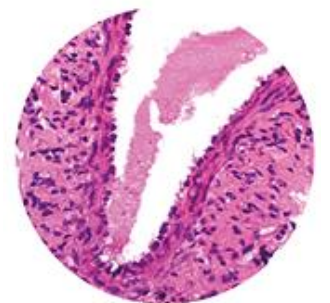
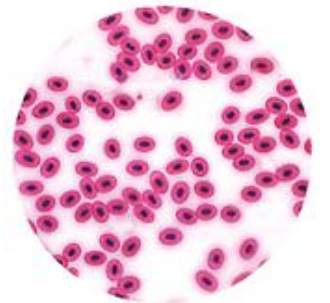
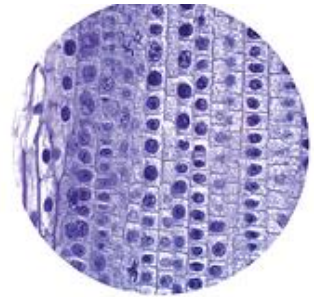
**LABMICRO**

8553545575 / 8050259428 

contact@labmicro.in 

www.labmicro.in 

## DIGITAL MONOCULAR MICROSCOPE



Shop No.1, Basement floor, Best Apartments, Dr. Arunachalam Road, 5th Stage BEML Layout,  
Rajarajeshwari Nagar, Bengaluru - 560 098

### SIZE AND WEIGHT

|              | SLV-10M    | SLV-10B    | SLV-10D    |
|--------------|------------|------------|------------|
| Product Size | 18x13x36CM | 18x13x36CM | 18x13x36CM |
| Net Weight   | 2.25KG     | 3.14KG     | 3.2KG      |



**OPTIONAL: Pointer Attachment, Micrometre/Grid/Grain Attachment, DIGITAL Attachment,**

| <b>Technical Specification</b> |  |
|--------------------------------|--|
| <b>MODEL No.</b>               | <b>SLV-10D</b>   |
| <b>Viewing Head:</b>           | Monocular, 45° inclined; 360° rotating. With 3MP / 5MP CMOS Camera and Standard Software.  |
| <b>Eyepiece:</b>               | WF10x/18 mm.<br><b>OPTINAL: Pointer, Micrometre Eyepiece</b>   |
| <b>Nosepiece:</b>              | Quadruple ball bearings revolving nosepiece.   |
| <b>Objectives:</b>             | Achromatic 4x/0.10, with anti-fungus treatment<br>Achromatic 10x/0.25, with anti-fungus treatment<br>Achromatic 40x/0.65, with anti-fungus treatment<br>Achromatic 100x/0.17, with anti-fungus treatment         |
| <b>Specimen stage:</b>         | Double layer Mechanical Stage 110mm X 120mm. / 60mm X 30mm.  |
| <b>Focusing:</b>               | Coaxial coarse and fine focusing mechanism with limit stop to prevent the contact between objective and specimen.  |
| <b>Condenser:</b>              | Diffusing filter with rotating diaphragm wheel 1.25NA  |
| <b>Illumination:</b>           | 1W LED, with light intensity control / LED with Battery Back-up.   |
| <b>Optional:</b>               | <ol style="list-style-type: none"> <li>1. Pointer Eyepiece</li> <li>2. Micrometre Eyepiece</li> <li>3. Grid Eyepiece</li> <li>4. Grain Eyepiece</li> <li>5. Mobile adapter</li> <li>6. Projector View</li> </ol> |